



**FLORIDA EAST COAST
INDUSTRIES**

Discover



HISTORY



Originally known as the Miami Belt Line, the **rail line was built by Henry Flagler's** company in the 1920s.

Over time, frequency on this line decreased and the tracks were decommissioned by the Florida East Coast Railway in 2002. Since its abandonment, the corridor has remained vacant and underutilized.



WHAT IS THE LUDLAM TRAIL?



The Ludlam Trail will **transform an abandoned rail line into a vibrant, pedestrian friendly signature urban park and public space**, complemented by trail-oriented development aimed at activating the corridor at strategic locations along the trail.



A CRITICAL LINK FOR THE CITY OF MIAMI

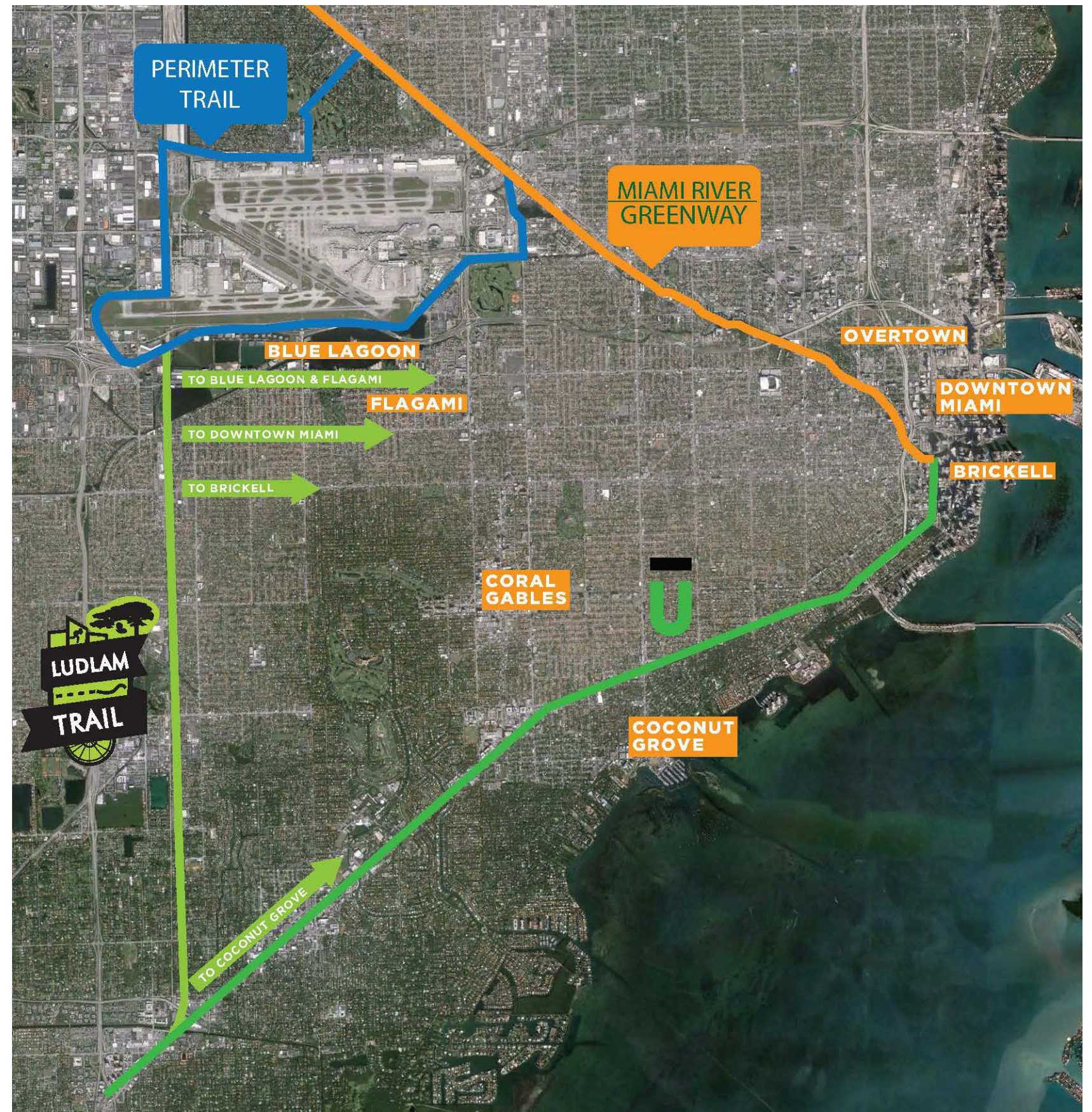


The Ludlam Trail is a critical link in a future network of **more than 30 miles** of parks and off-road trails called the **Miami Loop**.

The Miami Loop will connect communities in ways that have never existed in Miami-Dade County to provide access to recreation and alternative transit.

The Ludlam Trail will provide connectivity to:

- Brickell and Downtown Miami
- Coconut Grove
- Overtown
- Flagami
- Blue Lagoon



BENEFITS WITHIN A ½ MILE OF THE LUDLAM TRAIL



5  **SCHOOLS**

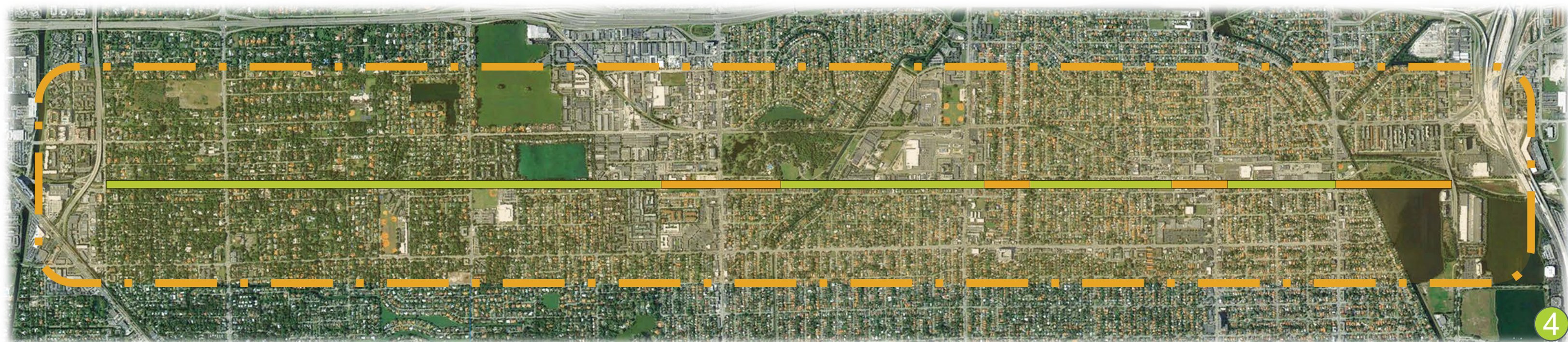
6  **PARKS**

 **LINK TO TRAIL NETWORK OF >26 MILES**

 **ALTERNATIVE TRANSPORTATION**

 **50 ACRES GREEN SPACE**

MIA
LUDLAM TRAIL at AD Doug
Barnes Park, Miami, FL



BENEFITS BEYOND 1/2 MILE



QUALITY OF LIFE ENHANCEMENT

- As evidenced by other trails around the country, The Ludlam Trail will have a **catalytic effect, spurring development** of new properties and redevelopment of existing properties
- **Crime rates are lower** in communities that contain a trail network than the overall crime rate for the region in which they are located
- Residents of cities with trail networks have **increased access to physical activities** improving health and wellness throughout the community

COMMUNITY & CIVIC ENGAGEMENT

- Through community outreach and event programming, The Ludlam Trail will create a public space for the exchange of ideas, information, and creativity and will **empower citizens to improve their neighborhood**

ALTERNATIVE TRANSPORTATION

OPTIONS

- A **total reduction of approximately 860,700 vehicle trips** from enhanced mobility and connectivity may be realized from the development of Ludlam Trail
- The Trail intersects with over **15 bus routes** and terminates at the **Dadeland North Metrorail Station**

GROWING MIAMI'S BRAND

- As generators of civic, social and economic benefits, signature linear parks like the Ludlam Trail can help Miami **retain talented individuals as well as draw new businesses**



ECONOMIC BENEFITS



PROPERTY TAX BENEFITS

- The Ludlam Trail will create **\$923M in incremental assessed value** for property owners over 20 years
- The resulting increase in assessed property values will generate an additional **\$153M in incremental property taxes** over 20 years

JOB GROWTH BENEFITS

- The Ludlam Trail will directly create **98 to 196 full-time equivalent construction jobs** and **81 to 162 indirect or induced jobs** during build-out.
- On an annual, on-going basis the trail will create **7 to 11 full-time permanent jobs** for park maintenance, operations, and management.

RETAIL, SALES TAX & TOURISM BENEFITS

- As a result of increased connectivity and alternative transportation options, as well as new destinations along the trail, **within the first 5 years, annual spending increases of \$33MM to \$63MM** will result in **additional annual sales taxes of \$2.3M - \$4.4M**
- Over 20 years, cumulative retail spending would be \$1.0B to \$1.6B, **resulting in a cumulative sales tax increase of \$72M to \$113M**
- Cities with trail networks can draw from a worldwide community of competitive and leisure cyclists **stimulating tourism and recreation related spending**



UNITING A CITY THROUGH EVENT PROGRAMMING



The **Ludlam Trail event series** will **activate and celebrate the trail**, with the goal of **bringing residents and community members together** to unify communities, promote health and wellness, and **strengthen the social and civic fabric of the City**



LUDLAM TRAIL EVENT CALENDAR 2016



JUNE

- 11 Screen on the Green
- 18 Ludlam Fit
- 25 Food Truck Rally

JULY

- 2 Screen on the Green
- 9 Ludlam Fit
- 16 Havana Nights (Signature Event)

AUG

- 6 Screen on the Green (Frozen)
- 13 Ludlam Fit (Yoga)
- 27 Food Truck Rally

SEPT

- 3 Screen on the Green
- 10 Ludlam Fit (Boot camp)
- 24 Que Pasa, USA? (Signature Event)

OCT

- 1 Screen on the Green
- 5 Walk to School (Signature Event)
- 8 Ludlam Fit (Baptist Health)
- 23 Health-o-Ween (Baptist Health)

NOV

- 5 Screen on the Green
- 12 Ludlam Fit (Baptist Health)
- 26 Food Truck Rally

DEC

- 3 Screen on the Green
- 10 Ludlam Fit (Baptist Health)
- 17 Ludlam Lights (Signature Event)



HAVANA NIGHTS VIDEO

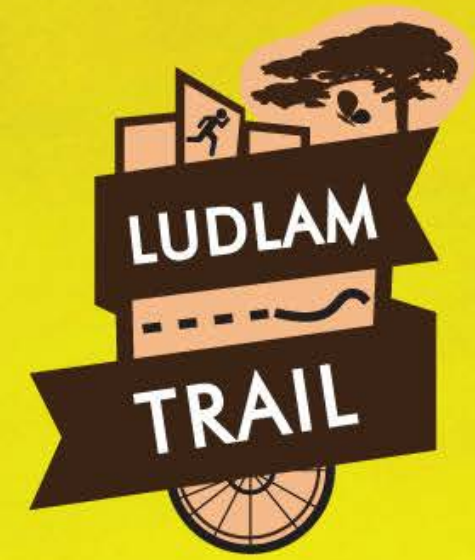


QUE PASA USA EVENT



**¿QUÈ
PASÀ,
U.S.A.?**

**come and watch
your favorite episodes
under the stars!**



**Saturday,
September
24**

CASE STUDIES - THE ATLANTA BELTLINE



The Atlanta BeltLine is a driving force in the urbanization of Atlanta, **transforming the City into a walkable, connected network of neighborhoods**

Benefits for the Entire City



Planned for 22 miles of trail, the Atlanta BeltLine will connect 45 neighborhoods & have an economic development impact of \$10-20B

City Wide Events



The 2016 Atlanta BeltLine Lantern Parade drew more than 75,000 people to the Eastside Trail to parade with bright, glowing lanterns!

Public Art on the BeltLine



Art on the Atlanta BeltLine invites residents and visitors to explore public art installations in a 22-mile loop around the City's core.

THE ATLANTA BELTLINE - CREATING THE VISION



BEFORE



AFTER



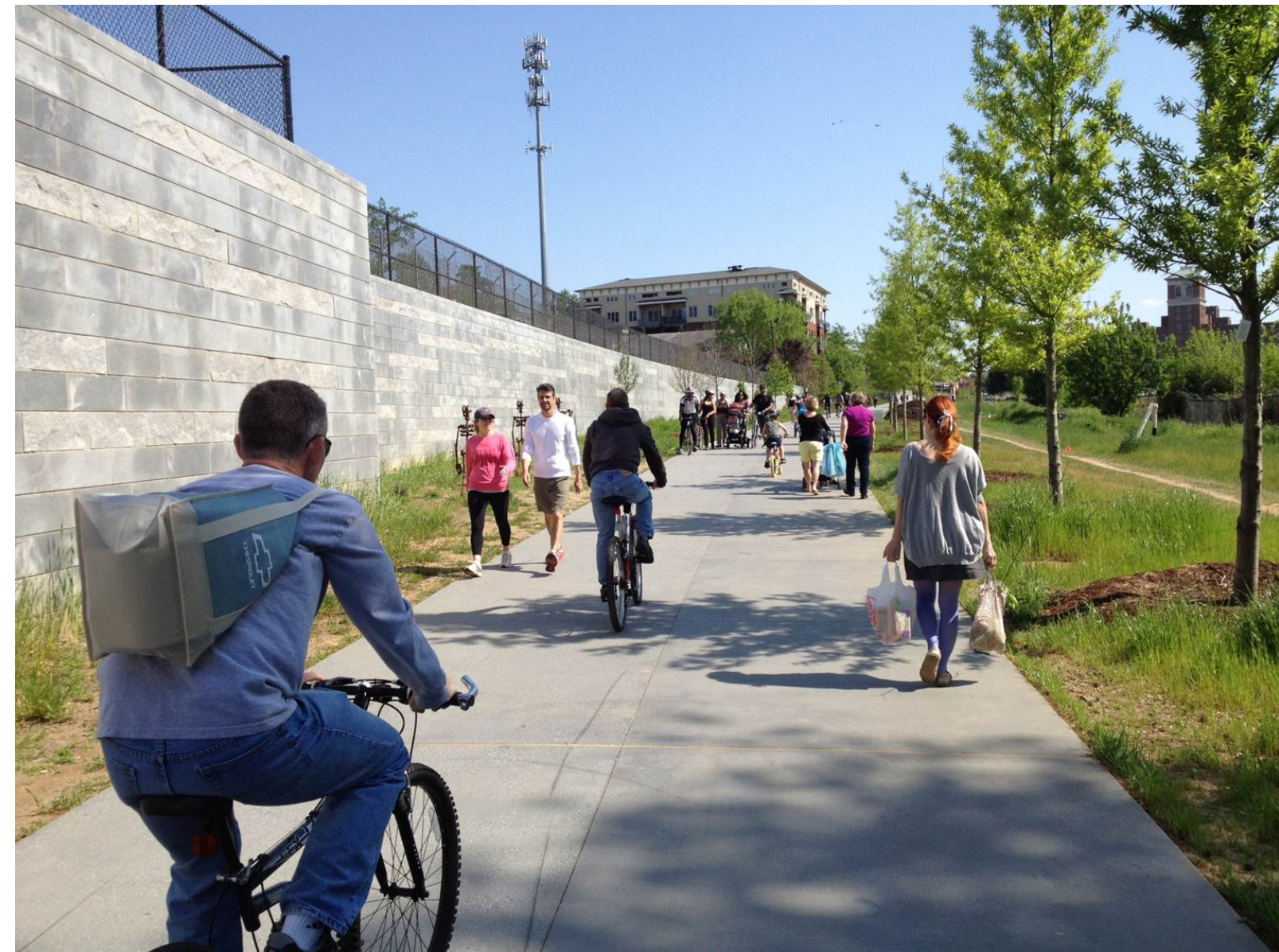
THE ATLANTA BELTLINE - CREATING THE VISION



BEFORE



AFTER



CASE STUDIES - THE KATY TRAIL, DALLAS



Privately funded and supported by the community, the historic Katy Trail is built on an old railroad line and has **quickly become an iconic destination for the people of Dallas**

Businesses on the Trail



With the Katy Trail generating a recurring source of users, businesses like the Katy Trail Ice House, that open up directly to the trail have become a favorite hangout for locals and visitors alike

Safety First



Due to community reinvestment spurred by the development of trails like the Katy Trail, crime rates are typically lower and residents enjoy a higher quality of life

Promoting Health & Wellness



The annual Michelob Ultra 5K on the Katy Trail helps generate over \$400k for park maintenance and operations and promotes health and wellness for Dallas residents

IMPLEMENTING THE VISION FOR LUDLAM TRAIL



The Ludlam Trail will **transform an abandoned rail line into a vibrant, pedestrian friendly signature urban park and public space**, that will connect 6 parks, 5 schools, alleviate traffic congestion and be a catalyst for the unification of neighborhoods and community reinvestment

BEFORE



AFTER





GET INVOLVED!

Help us see this project come to life!

LEARN MORE AT ludlamtrail.org



@ludlam_trail
#LudlamTrail

